

õ

ö



«

,

»

(145/200923)

:

(

407/80)

2010

0

ΠΙΝΑΚΑΣ ΠΕΡΙΕΧΟΜΕΝΩΝ

.....	3
.....	4
1. ΠΕΡΙΒΑΛΛΟΝΤΙΚΗ ΕΚΠΑΙΔΕΥΣΗ ΚΑΙ ΕΚΠΑΙΔΕΥΣΗ ΓΙΑ ΤΗΝ ΔΕΙΦΟΡΟ ΒΙΩΣΙΜΗ ΑΝΑΠΤΥΞΗ	
1.1	5
1.2	6
1.3	9
2. ΊΔΡΥΣΗ ΚΑΙ ΛΕΙΤΟΥΡΓΙΑ ΚΕΝΤΡΩΝ ΠΕΡΙΒΑΛΛΟΝΤΙΚΗΣ ΕΚΠΑΙΔΕΥΣΗΣ	
2.1	20
2.2	22
2.3	27
2.4 ΤΟ	28
2.5	31
2.6	34
3	
3.1	35
3.2 Μ	
.....	37
3.3 Μ	
.....	38
3.4	
.....	42
4. ΠΕΡΙΒΑΛΛΟΝΤΙΚΗ ΕΚΠΑΙΔΕΥΣΗ ΣΕ ΠΡΟΣΤΑΤΕΥΟΜΕΝΕΣ ΠΕΡΙΟΧΕΣ	
4.1	45
5. ΤΟ ΝΗΣΙ ΤΗΣ ΘΑΣΟΥ	
5.1 ΙΣΤΟΡΙΑ ΤΟΥ ΝΗΣΙΟΥ	49
5.2 ό ό	50
5.3	52
5.4	52
5.4.1	54
5.4.2 Β	57
5.4.3	57
5.5.	58
5.6	59
5.6.1	60
5.6.2 LIFE	61
5.6.3	61

6.ΟΙ ΠΡΟΟΠΤΙΚΕΣ ΔΗΜΙΟΥΡΓΙΑΣ ΚΠΕ ΣΤΗΝ ΘΑΣΟΥ

6.1	63
6.1.2	63
6.1.3	65
	67
	68
	81
	98

∅

.

,

,

,

,

,

∅

.

,

«

».

ΠΕΡΙΛΗΨΗ

6

2010

3

ABSTRACT

This study consists of 6 chapters. The first chapter is an attempt to study the theoretical framework of concepts and terms that promote the institution of CEE. Next is an overview of the establishment and operation of the CEE, the CEE as an international institution, the legal framework and establishing conditions for CEE. In chapter three gives general findings on the CEE.

The fourth chapter provides information on the protected areas to provide the necessary information to understand the possibility of presenting the island of Thassos for implementation EE programs in protected areas.

The fifth chapter contains information about the island of Thassos, island's history, geological, petrographic, soil, climate conditions, flora and forest vegetation, fauna, and the part of Thassos that is in the wide network of Special Protection Areas.

Finally in the sixth chapter presents the prospects of creating a CEE at Thassos, the environmental specificity of the region and exploit the environment in a holistic dimension of it and conditions for setting up a CCE at the island. Finally, given the general conclusions.

1.1 ΟΡΙΣΜΟΣ ΚΑΙ ΠΕΡΙΕΧΟΜΕΝΟ ΤΗΣ Π.Ε

Roth (1978), «
'50 '60,
».
, '70.
« » ()
'60
'70.
Disinger(1983)
1948 IUCN . Roth (1978)
Brennan
(Wheeler 1985, Sterling 1992, Carson 1980) « »
Keely 1965,
70.
1970,
60- 70,

1976).
» (UNESCO

(UNESCO, 1978):

1.2

2004).

Farrant

(Farrant, 1980).

(Faure et al 1972).

Coombs

(informal education)

, ,

(formal education)

(full-time)

- **(non-formal education)**

» (Coombs, 1973)

.(, 2004)

:

, . . (Heimlich, 1993, UNESCO,1986)

- . .

, ,

. . , - . .

,

(UNESCO, 1986)

-

. . .

.

. .

,

.

. .

.

,

. .

. .

.

,

. . .

,

.

1.3 Η ΠΕΡΙΒΑΛΛΟΝΤΙΚΗ ΕΚΠΑΙΔΕΥΣΗ ΚΑΙ Η ΕΚΠΑΙΔΕΥΣΗ ΓΙΑ ΤΗΝ ΔΕΙΦΟΡΟ ΑΝΑΠΤΥΞΗ

. .

,

(,2006) .

ø60,

(,2007),

μ
(Carew-Reid J. et al., 1994).

(Gigliotti 1990).

Gigliotti (1990)

. (, 2006)

(, 2007).

(1987),

,

Rio de Janeiro (1992) «

»

(1997).

36 Agenda 21.

(1)

,

(2)

,

(3)

,

(4)

. (McKeown, 2002)

(Hopkins, 1998, Rassool, 1999; Jickling, 2000, Foster, 2001, Gough, 2002, Bonnett, 1999).

(Jickling, 2000).

,

(Norgaard, 1994? Dale,

2001).

,

(Jucker, 2001)

«

()

().

(Jucker, 2001, Johnson, 1999).

.(Dale & Newman, 2005).

E, (McKeown & Hopkins, 2003 , Stevenson, 2006).

E. McKeown & Hopkins, 2003

E

()

(),

(,2007 & 2004).

(,2004).

,

,
.

6

2004-2010,

, . . .

,

,

)

- - ,

)

,

)

,

)

,

)

.(, 2006).

,

. . . :

1)

« »

.

2)

.

3)

,

4)

,

,

.

5)

.

6)

,

..

.

7)

,

,

,

21

.

8)

,

-

.

9)

,

.

10)

..

..

,

,

11)

,

,

..

12)

13)

14)

15)

16)

.(E.C.2005).

Ø

(., 2006)

É

/

É

É

É

É

É

(12.000)

1

É , ,

É

É ,

.(, 2007).

2

. ,
- - .

.(& , 2000.)

, ,
« »

- ()» (, 2006).

,

2.1 ΊΔΡΥΣΗ ΚΑΙ ΛΕΙΤΟΥΡΓΙΑ ΚΕΝΤΡΩΝ ΠΕΡΙΒΑΛΛΟΝΤΙΚΗΣ ΕΚΠΑΙΔΕΥΣΗΣ

(. . .)

, 1970 1980.
(1977), (1987),
, . . . »
,2003).
. . . .
1990 « »
«Agenda 21» (1992),
5
« » (1993),
,
,
(, 2000)
« », ,
,
,
,
. . . ,

1992

(Recommendation No (91) 8),

μ μ μ
, , (/ , 2006/2007).

2.2 ΤΑ ΚΕΝΤΡΑ ΠΕΡΙΒΑΛΛΟΝΤΙΚΗΣ ΕΚΠΑΙΔΕΥΣΗΣ ΩΣ ΔΙΕΘΝΗΣ ΘΕΣΜΟΣ.

,
.
Ο
.
" ",
, (, 1994)
()
, , , .
: "Nature Centres", "Nature Science Centres", "Urban Studies Centres",
"Outdoor Education Centres", "Residential Nature Centres", "Field Study Centres", "Nature
Conservation Centres", "Rular Centres", .
:
,

. (,1994)

30

60,

:

•

•

•

(outdoor Education), (field studies)
(environmental studies).

•

. (, 1998)

Smith

1200

:

1.

2.

3.

4. , , ,
 , , ,
 .
5. , , ,
6. ,
 .
7. , , , ,
 .
 ,

(RURAL CENTRES)

(city farms)

()

, .

70

. (Council for Urban Studies

Centres.)

. (Council for Urban Studies Centres.)

Centres.)

. (Council for Urban Studies

Jariz (1994),

'80

Pereira (1994),

area escola,

.(, 2004)

2000,

. . CASTO VERDE

,
(20).
. . . .
. . . .
(, , ,).
2-3 , / ,
, .
, ,
n« ».
,
.

2.3 ΔΙΚΤΥΟ ΚΕΝΤΡΩΝ ΠΕΡΙΒΑΛΛΟΝΤΙΚΗΣ ΕΚΠΑΙΔΕΥΣΗΣ ΣΤΗΝ ΚΥΠΡΟ

μ μ
μ 1990 μ
μ
, μ μ
2000
«
μ ».
μ μ μ

μ , μ μ μ μ μ
 (, 2005), μ μ
 ,
 μ -μ
 (UNECE, 2005).
 , μ
 , μ μ μ . μ
 . Η
 . μ
 , μ μ
 μ μ μ μ μ
 - e tran (2002) μμ
 μ , .

2.4 ΤΟ ΝΟΜΙΚΟ ΠΛΑΙΣΙΟ ΚΑΙ Η ΙΔΡΥΣΗ ΤΩΝ ΚΠΕ ΣΤΗΝ ΕΛΛΑΔΑ

ð ö
 1993. 23 1997
 ,
 .
 1650 / 1986 « »
 1 ,
 25 ()
)

1892 /90

..

()

1892 /90

.

.,

.

.(

3-4-1991)

.

,

,

.

:

.)

,

,

.

()

.

-

.

,(

,

)

,

.(

).

.)

-

.

(

,

)

.

..

.

，
，

·
()

·(2000)

·(2000).

，

«

» (

1-2-93)

()

(1994)

，

·

，

7)

(-

).

8)

/ /

/ / / / ..

(

).

2.6 Ο ΡΟΛΟΣ ΤΩΝ ΥΠΕΥΘΥΝΩΝ ΠΕΡΙΒΑΛΛΟΝΤΙΚΗΣ ΕΚΠΑΙΔΕΥΣΗΣ

2/3026/27-8-90

.Ε. :

.Ε. ,

,

,

,

.Ε.

.Ε.

.Ε.

&/ / /

.

, /

(. 2007).

,

.E.

-

(.,

2006).

3.1 ΚΕΝΤΡΑ ΠΕΡΙΒΑΛΛΟΝΤΙΚΗΣ ΕΚΠΑΙΔΕΥΣΗΣ ΚΑΙ ΕΚΠΑΙΔΕΥΣΗ ΓΙΑ ΤΗΝ ΔΕΙΦΟΡΟ ΑΝΑΠΤΥΞΗ

() μ

,

μ

μ

.

μ μ

() <UNECE, 2005).

μ

μ :

) μ

,

) μ μ - ,

) ,

) μ ,

) μμ

(/ , 2007).

μ

,

μ

,

μ

,

,

.

,

μ

μ

μ

,

μ

μ -

,

,

(Fereira, 2003).

,

,

,

2000,

,

μ

μ

.

(2006)

μ

μ

,

μ

,

μμ

μ

μ

μ

,

.

μ

μ

μ

,

,

,

μ

,

μ

,

,

μ ,

(, 2004).

μ

,

μ

,

,

μ

μ

,

μ

μ

μ (, 2004, , 2000, , 2007).

Simmons (1986, 1991)

μ 15%

Fereira (2003),

« μ »

μ

μ

μ

μ

μ

μ

μ

,

μ

, μ

,

μ

μ

μ

Uzell, Rutland & Whistance (1995)

μ

μ

μ

Tilbur & Cooke (2005),

,

,

μ

μ

μ

,

2004, www.kpe.gr)

.(,

5 9.(, 2004)
(2004)

2001,

:

- 1.
- 2.
- 3.
- 4.
- 5.

6.

()

7.

8.

9.

10.

11.

12.

13.

14.

15.

16.

:

2010,

∅

(<http://pyrgos-news.blogspot.com>)

(2006).

(. . 2003).

(Nepal and Weber 1995).

(Walpole Goodwin 2001).

. (Francis 1996, Conway 1997, Mehta and Heinen 2001, Nepal 2002).

(Trakolis 2001).

(IUCN 1993).

(McNeely 1995, Harris et al. 1996, Venter and Breen 1998, Beltran 2000).

(IUCN 1991, Schneider and Burnett 2000)

(. .)

, (UNESCO,
)

. . . (*et l.*, 2003)

. 1650/1986 (-) .

18

() :
)

1. ,

2. ,

3. , 19, :

-
-
-
-
-

4. ,

5.

3

21 . 2

6.

. 1

21 (

)

« ...

».

(& ,2008).

(Fien 1997, Bradley

et al. 1999, Salequzzman & Stocker 2001),

(Papapanagou et al. 2005,

et al. 2006).

2000

(),

(. .)

27

(

) () ,
 - - .
 () .
 . (IUCN)
 : « / ,
 ».
 , , 92/43 «
 »,

Natura 2000.

Natura 2000	239
() -	92/43/ . . . - 163
() -	79/409/ . . .

« . , 31 ».
 , 3.390.146 ha. , 2.774.895 ha
 615.251 ha . ,
 Natura 2000 21.0% 5.5%
 (2007 - :).

7-8
(1.204 ,)

5.1 ΙΣΤΟΡΙΑ ΤΟΥ ΝΗΣΙΟΥ

2000 . .. 700 . .

Gatilusi 1353

1455

. 18 1912.

1600

.(, 1994)

5.2 ΓΕΩΛΟΓΙΚΕΣ - ΠΕΤΡΟΓΡΑΦΙΚΕΣ-ΕΔΑΦΙΚΕΣ ΣΥΝΘΗΚΕΣ

Orsyald

(, 1980)

10%

Olika

A 6 C

5.3 ΚΛΙΜΑΤΙΚΕΣ ΣΥΝΘΗΚΕΣ

(1980)

(. . .)

« »,

(. . .).

ó

ó

(

),

10 C.

8

,

2006)

.(

5.4 ΒΛΑΣΤΗΣΗ ΚΑΙ ΧΛΩΡΙΔΑ

(,). '80
 1/4
 :
 :
 (Pinus nigra) (Pinus brutia).
 - ().
 (Olea oleaster), (Quercus coccifera), (Quercus Hex)
 (Pistacia lentiscus).
 Erica arborea () Erica
 verticillata ().
 , 3/4 .
 500 . ,
 500 . , 800 .
 ,
 (Castanea sativa), (Juglans
 regia), (Pistacia terebinthus), (Cotinus coggygria),
 (Cercis siliquastrum), (Juniperus oxycedrus & J. excelsa), (Crataegus
 monogyna), (Ilex aquifolium), (Vitex agnus-castus),
 (Platanus orientalis), (Salix sp.),
 (Populus tremula).
 ,
 ,
 ().
 : Centaurea ipsaria, Lotus aduncus, Ranunculus thasius, Verbascum

cylindrocapum.

Crataegus aegea

..(

2006)

5.4.1 ΑΓΕΙΑΚΑ ΦΥΤΑ

1816 (*Flora Graecae Prodromus*),

Grisebach (1841) 1839,

Sintenis Bornmüller

1891.

Rechinger (1943)

Stojanov & Kitanov (1945, 1946).

(Stojanov

& Kitanov 1950).

Tutin et al (1964-1980), Davis et al (1965-1988) Strid & Kit

Tan (1997, 1998).

Chilton (in Vladimirov *et al* 2009)

21

. Chilton

(2010)

1999),

(Chilton 1997).

Chilton,

.Chilton (2010)

(*Lotus aduncus*
gebelia L.*Geocaryum bornmuelleri**Cerastium decalvans* ssp. *glutinosum**Dianthus achartarovii**Paronychia bornmuelleri**Alyssum obtusifolium* ssp. *helioscopioides**Lotus aduncus**Galium decorum**Verbascum cylindrocarpum**Festuca cyllenica* ssp. *thasia*, 13 « » ,
, *Ranunculus thasius*.

, by

Popnikolov (1956) 27

Abbott (2009) 47

Aspicilia calcarea (L.) Mudd var. *calcarea* Walter (1976)*Bryoria implexa* (Hoffm.) Brodo & D. Hawksw.*Caloplaca flavescens* (Huds.) J. R. Laundon*Caloplaca inconnexa* (Nyl.) Zahlbr. var. *inconnexa**Caloplaca pollinii* (A. Massal.) Jatta*Caloplaca saxicola* (Hoffm.) Nordin*Cladonia convoluta* (Lam.) Anders*Cladonia foliacea* (Huds.) Willd.*Cladonia furcata* (Huds.) Schrad.*Cladonia pyxidata* (L.) Hoffm.

Cladonia rangiformis Hoffm.
Collema cristatum (L.) F. H. Wigg.
Collema nigrescens (Huds.) DC.
Collema polycarpon subsp. *corcyrense* (Arnold) Pisút
Diploschistes muscorum (Scop.) R. Sant.
Diploschistes ocellatus (Vill.) Norman
Evernia prunastri (L.) Ach.
 [Flavocetraria nivalis (L.) Kärnefelt & A. Thell - **presumed incorrect**]
Hypogymnia physodes (L.) Nyl.
Hypogymnia tubulosa (Schaer.) Hav.
Lecanora dispersa (Pers.) Sommerf.
Lecanora rupicola subsp. *sulphurata* (Ach.) Leuckert & Poelt
Leprocaulon microscopicum (Vill.) Gams ex D. Hawksw.
Leptogium lichenoides (L.) Zahlbr. var. *lichenoides*
Lobaria pulmonaria (L.) Hoffm.
Lobothallia radiosa (Hoffm.) Hafellner
Neofuscelia pulla (Ach.) Essl.
Ochrolechia androgyna (Hoffm.) Arnold
Ochrolechia parella (L.) A. Massal.
Parmelina tiliacea (Hoffm.) Hale
Pertusaria albescens (Huds.) M. Choisy & Werner var. *albescens*
Pertusaria amarescens Nyl.
Pertusaria flavida (DC.) J. R. Laundon
Pertusaria hymenea (Ach.) Schaer.
Pertusaria pertusa (Weigel) Tuck.
Physconia distorta (With.) J. R. Laundon
Platismatia glauca (L.) W. L. Culb. & C. F. Culb.
Protoblastenia rupestris (Scop.) J. Steiner
Pseudevernia furfuracea (L.) Zopf var. *furfuracea*
Pseudevernia furfuracea var. *ceratea* (Ach.) D. Hawksw.
Ramalina elegans (Bagl. & Car.) Stizenb.
Ramalina farinacea (L.) Ach.
Ramalina subfarinacea (Nyl. ex Cromb.) Nyl.

Solenopsora candicans (Dicks.) J. Steiner

Toninia sedifolia (Scop.) Timdal

Verrucaria calciseda DC.

Verrucaria nigrescens Pers.

Xanthoparmelia conspersa (Ach.) Hale

5.4.2 ΒΡΥΑ ΚΑΙ ΒΡΥΟΦΥΤΑ

H (Preston 1981, 1984a &)

Enno Damm and Ruprecht 1988

Düll (Damm 1989; Damm & Düll 1995, 1994

Townsend (1977), 33 Heraticae 142

taxa, *Cephalozia hampeana* *Marchantia* var *polymorpha*
aquatica, Dull (1995).

, *Ditrichum cylindricum* *Trichostomum* var *brachydontium*
.cuspidatum (Düll 1995).

5.4.3 ΔΑΣΙΚΗ ΒΛΑΣΤΗΣΗ

(

1973, 1986), :

) (*Quercetalia ilicis* , ,

(*Pinus brutia*)

1) *Oleo ceratonion*, ,

, 0 ó 300 m *Oleo*

lentiscetum.

Pistacia lentiscus, Erica manipuliflora, Myrtus communis, Olea europea, Quercus coccifera, Lonicera etrusca, Rosa sempervirens, Phillyrea latifolia Rubia peregrina.

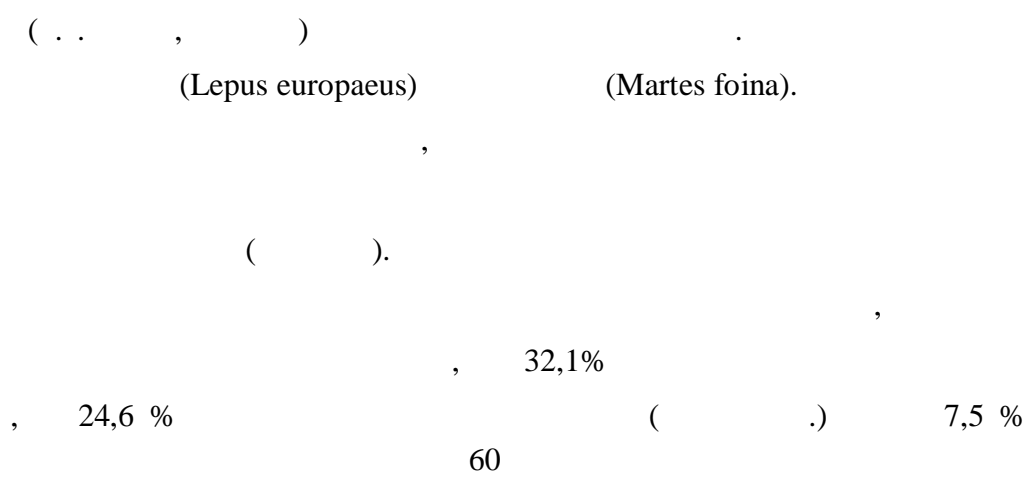
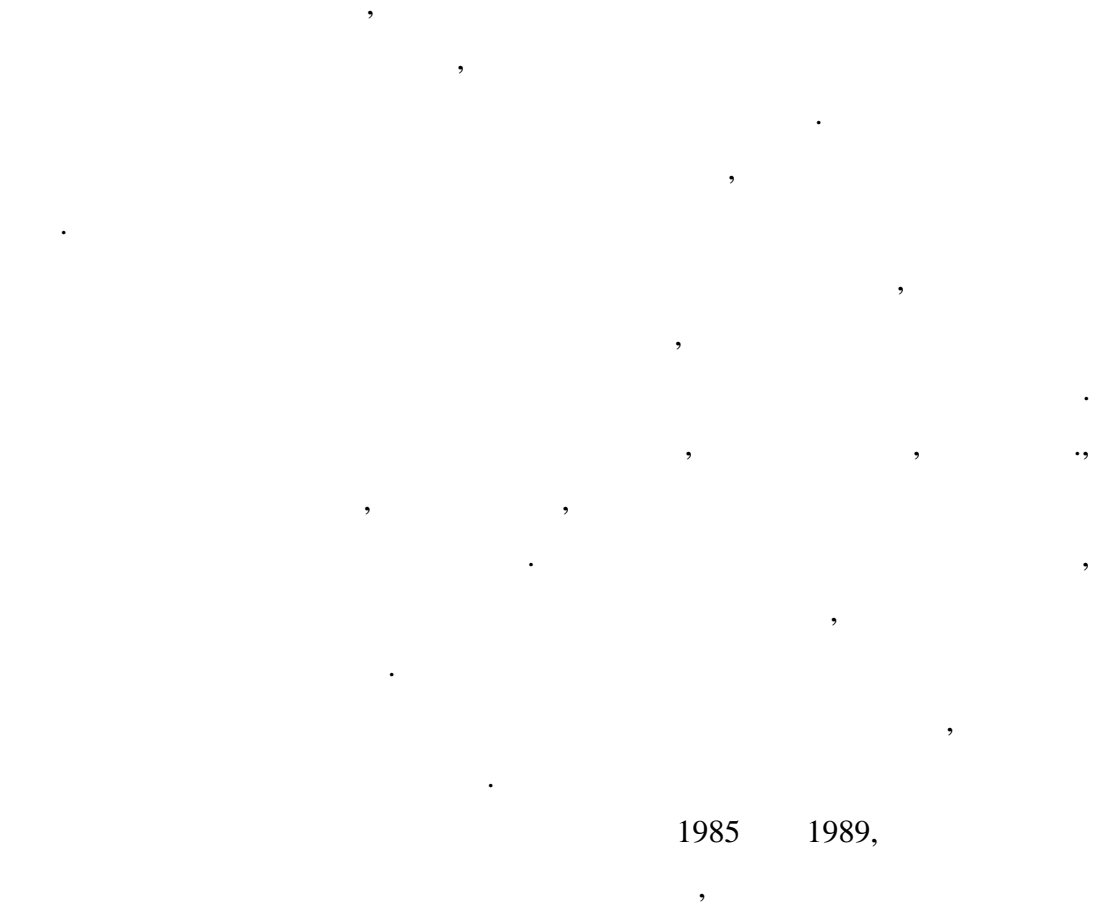
2) Quercion ilicis, Orno ó Quercetum ilicis 0 ó 300 m. (1989). Erica arborea Erica manipuliflora, Quercus ilex, Arbutus unedo, Phillyrea latifolia Fraxinus ornus. (Quercetalia pubescentis), 300 ó 800 m 200 ó 600 m.

1) Ostryo carpinion, Coccifera carpinetum, Carpinus orientalis. Quercus coccifera () (Fagetalia) ó .

(Pinus nigra). (Pinetalia nigrae), Quercetllia pubescentis (). Abietum borisii ó Regis (1992) 225 ,

5.5. ΠΡΟΣΤΑΤΕΥΤΙΚΕΣ ΕΠΙΔΡΑΣΕΙΣ ΤΩΝ ΔΑΣΩΝ

5.6 Η ΠΑΝΙΔΑ ΤΟΥ ΝΗΣΙΟΥ



μμ LIFE «
 » μ
 17
 2009-2012, μ
 , (),
 (SPEA), μ
 μ . . .
 , μ
 , μ μ
 .
 μμ :
 ()
 μ , μ
 ; ;
 . μ
 μ

5.6.3 ΜΕΓΑΛΟ ΤΜΗΜΑ ΤΗΣ ΘΑΛΑΣΣΗΣ ΣΤΟ ΠΑΝΕΥΡΩΠΑΪΚΟ ΔΙΚΤΥΟ ΤΩΝ ΖΩΝΩΝ ΕΙΔΙΚΗΣ ΠΡΟΣΤΑΣΙΑΣ

Natura
 ()
 μ ,
 μ .
 μ μ μ
 . μ
 μμ μ
 , μ
 .
 μ :

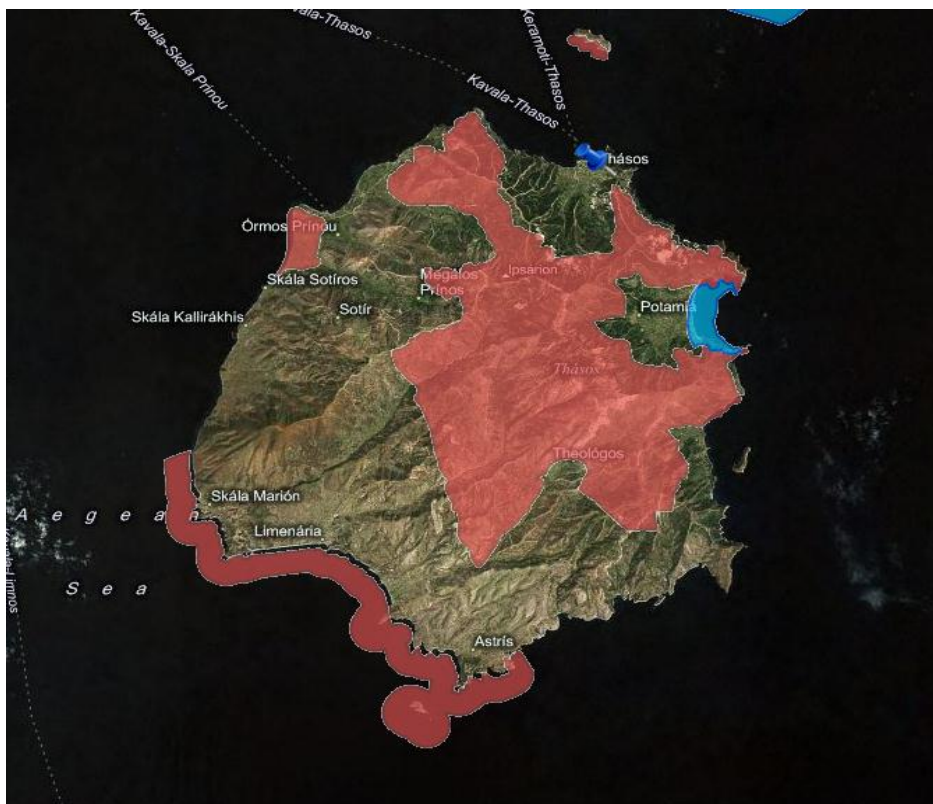
- 1) *Buteo rufinus*, (>1· 2 .)
- 2) *Falco biarmicus*, (>2 .)
- 3) *Phalacrocorax carbo*, (>150 .)

:

- 1) *Hieraetus fasciatus*, (2 .)
- 2) *Aquila chrysaetos*, (1 .)
- 3) *Falco peregrinus*, (5-10 .)
- 4) *Bubo bubo*, (>2-3 .)

μ μ μ Life μ μ μ μ μ

(2010)



www.ekby.com

..

.

μ

, .
2003).

. (&

. . . .

,

,

,

(,

2006).

(,1994).

.

.

.

. (www.oikipa.gr)

,

.(, 2004)

. . . .

,

,

E

, . (2006).

, , μ
μ . . μ ,

, . & , . (2003), , :

. & , . (2007).

30

., (2006),

, 20

, . & - etra . (2002).

20

(. 458-477). :

, .& , . (2006/2007). μμ

- μ . :

,

, . (2005). μμ :

« ».

, . & , . (2000), μμ
μ , Themes in Education,
. 1 :4.

, ,, (2003)
" : "

, ., (2000),
, .1

, . (2004).
, μ μ ,

, (1980). ,

, . (2000). :

, (1994)

, ., (1986) , :

, (1994). «
» - :

, (1998) , : -

„(2008) ö
 , &
 . ö 40 , 12-14/12/2008
 - „ „ „(2008) ö
 :
 ö40 , 12-
 14/12/2008
 , . (1998), , ,
 , .
 (, .)
 , . (7
 17-25 2000)
 - , 2004,“ ;
 , -
 „ (2004),
 & , 20 .
 „ (2007), . . ,
 , 30 . 2007
 „ „ (1995):
 « » . -
 , „ (1992)

,2007,

.

, . (2006).

. :

μμ .

., (2007),

-

, 30

.

., (2006),

, :

.

., (2007),

.

, 3

., (2004),

2

«

,

,

»

2004.

„

„

„

. &

.

(2003).

&

.

/ 7.,

. 147-175

, . (2006)

:

, 3

,

ó

,

.

Abbott, B. F. M. (2009). Checklist of the lichens and lichenicolous fungi of Greece. *Bibliotheca Lichenologica* **103**:1-368

Bryan L.A. & Abell S.K. (1999). Development of professional knowledge in learning to teach elementary science. *Journal of Research in Science Teaching*, 36(2), 121-139.

Beltran, J.,(2000). "Indigenous and traditional peoples and protected areas: Principles, guidelines and case studies". Gland and Cambridge: IUCN and WWF

Bonnett, M. (1999), "Education for sustainable development: a coherent philosophy for environmental education", *Cambridge Journal of Education*, Vol. 29 No. 3, pp. 313-24.

Bradley, J.C., Waliczek T.M. & Zajicek, J. (1999). Relationship between environmental knowledge and environmental attitude of high school students. *Journal of Environmental Knowledge*, 30 (30), 17-21.

Carson, s. (1980). Environmental Education in the Eighties -What Are the Prospects? Review of Environmental Education Developments,

Chilton, L. (1997). *Plant list for Skala Potamias*. Marengo Publications.

Chilton, L. (2010). *Plant list for Thasos*. Marengo Publications.

Conway, K. (1997). Gender and Culture Influences on Attitudes Towards National Park Punta Izoto, Honduras: An Assessment for Participatory Conservation and Management. MA. Thesis, University of Florida

Cooper, G. (2005). (.), (. 621-634). Gutenberg.

Council for Urban Studies Centres. "State of the An Report". Russell Press.

Dale, A. (2001), *At the Edge: Sustainable Development in the 21st Century*, University of British Columbia Press, Vancouver.

Dale, A. and Newman, L., (2005), "Sustainable development, education and literacy" *International Journal of Sustainability in Higher Education* Vol. 6 No. 4, pp. 351-362

Davis, P.H. et al. [Eds.] (1965-1988). *Flora of Turkey and the east Aegean Islands*. Vols 1-10. Edinburgh University Press

Damm, E. (1989). *Untersuchungen zur Moosflora von Thassos/Griechenland*. 60pp. Examensarbeit, University of Duisburg.

Damm, E. and Düll, R. (1995). Bryophytes of Thasos. *Bryologische Beiträge*, 10: 143-158.

Deri, . (2005).
(.), , μ (.
719-752). : Gutenberg.

Disinger J. F., Monroe M., (1994) *Defining Environmental Education*, University of Michigan, EE Toolbox - Workshop Resource Manual

Düll, R. (1995). Survey of the bryophytes of Greece. *Bryologische Beiträge*, 10: 1-125.

European Commission (E.C.) (2005). "Communication from the Commission to the Council and the European Parliament on the Review of the Sustainable Development Strategy: A Platform for Action". COM 685/final, Brussels.

Farrant J.S. (1980). "Principles and Practice of Education", Longman

Ferreira, J. (2003). The Assessment of an Environmental Education Center in Kruger National Park, South Africa. *Applied Environmental Education and Communication*, 2, 99-103

Fien, J. & Tilbury, D. (1996). Learning for a Sustainable Environment: An Agenda for Asia and the Pacific Bangkok: UNESCO Asia Pacific Centre for Educational Innovation for Development BKA/96/M/252-500

Fien, J. (1997). Stand up, stand up and be counted: understanding the myths of environmental education. *Australian Journal of Environmental Education*, 13, 21-36.

Foster, J. (2001), "Education as sustainability", *Environmental Education Resources*, Vol. 7 No. 2, pp. 153-65.

Francis, M. (1996) "Community involvement and the management of vegetation in selected communal areas in Zimbabwe". In Bihini Won wa Musiti (Ed.), 1996 Pan African symposium on sustainable use of natural resources and community participation .Harare: IUCN

Gough, S. (2002), "Right answers or wrong problems? Towards a theory of change for environmental learning", *The Trumpeter*, Vol. 18 No. 1, pp. 1-15.

Gräsel C. (2000). Closing the gap. In *Research on Environmental Education in Europe*, eds. Bayrhuber H and Mayer L, Empirical. Münster/New York/München Berlin: Waxmann.

Grisebach, A. (1841). *Reise durch Rumelien und nach Brussa im Jahre 1839*. Vandenhoeck und Ruprecht, Göttingen (2 vols.).

Gigliotti, L.M. (1990). Environmental Education: What went wrong? What can be done ? *Journal of Environmental Education*, 22(1), 9-12

Ginns I.S. & Watters J.J. (1995). An analysis of scientific understandings of pre-service elementary teacher education students. *Journal of Research in Science Teaching*, 32(2), 205-222.

Harris, J.M., Branch, G.M., Wilson, A.J. (1996) "Comanagement and participatory harvesting of mussels by subsistence gathers on the Kwazulu-Natal coast of southern Africa". In Bihini Won wa Musiti (Ed.), (1996) Pan African symposium on sustainable use of natural resources and community participation. Harare: IUCN.

Hopkins, C. (1998), "The content of education for sustainable development", in Scoullos, M.J.(Ed.), *Environment and Society: Education and Public Awareness for Sustainability*, University of Athens, Athens.

IUCN(1991) "Protected areas of the world: A review of national systems". Switzerland and Cambridge: IUCN, *Gland*, Vol. 2, pp. 184-192.

Jickling, B. (2000), "Education for sustainability: a seductive idea, but is it enough for my grandchildren?", available at: www.ec.gc.ca/education/ee_jickling_e.htm

Johnson, P. (1999), "Problem-based, cooperative learning in the engineering classroom", *Journal of Professional Issues in Engineering Education and Practice*, Vol. 125 No. 1, pp. 8-11

Jung M.L. & Tonso K.L. (2006). Elementary pre-service teachers learning to teach science in science museums and nature centers: a novel program's impact on science knowledge, science pedagogy and confidence teaching. *Journal of Elementary Science Education* (18)1.

Jucker, R. (2001), "Sustainability? Never heard of it!: some basics we shouldn't ignore when engaging in education for sustainability", *International Journal of Sustainability in Higher Education*, Vol. 3 No. 1, pp. 8-18.

Carew-Reid J., Prescott-Allen R., Bass S., Dalal-Clayton J., (1994), *Strategies for National Sustainable Development*, Earth Scan Publications, Ltd, London

McKeown, R., (2002) *Education for Sustainable Development Toolkit, Version 2*
Energy, Environment and Resources Center University of Tennessee

Mehta, J.N., Heinen, J.T. (2001) Does community-based conservation shape favorable attitudes among locals. An empirical study from Nepal *Environmental Management*, No 28, pp. 165-177

McKeown, R., Hopkins, C., (2003). EE6 ESD: defusing the worry. *Environmental Education Research* 9 (1), 117-128.

McNeely, J.A. (1995) Expanding partnership in conservation. Washington, DC: Island Press

Norgaard, R. (1994), 'The co-evolution of environmental and economic systems and the emergence of unsustainability', in England, R. (Ed.), *Evolutionary Concepts in Contemporary Economics*, University of Michigan Press, Ann Arbor, MI.

Nepal, S.K. (2002) 'Involving indigenous peoples in protected area management: Comparative perspectives from Nepal, Thailand, and China.' *Environmental Management*, No. 30, pp. 748-763

Nepal, S.K., Weber, K.E. (1995) Managing resources and resolving conflicts: national parks. *International Journal of Sustainable Development and World Ecology* No 2, pp. 116-125.

Papapanagou, E., Tiniakou, A. & Georgiadis, Th. (2005a): 'Environmental education as a management tool in protected areas: the Messolongi wetlands example (Western Greece)' In: LEKKAS T.D. (ed.). *Proceedings of the 9th International Conference on Environmental Science and Technology of GNEST (Global Network for Environmental Science and Technology)*, Rhodes island, Greece, 1-3 September, pp: B688-B693.

Popnikolov, A. (1956.) Flechten von Ost - (Griechisch) Mazedonien. *Bull. de L'Institut Botanique, Academie Bulgare des Sciences*, 4: 353-356. [in Bulgarian]

Preston, C.D.(1981) A check-list of Greek liverworts. *Journal of Bryology*, 11: 537-553.

Preston, C.D.(1984a). A check-list of Greek mosses. *Journal of Bryology*, 13: 43-95.

Preston, C.D. (1984b). A check-list of Greek liverworts: addendum. *Journal of Bryology*, 13: 97-100.

Rassool, N. (1999), *Literacy for Sustainable Development in the Age of Information*, Multilingual Matters Ltd, University of Reading, Reading, MA.

Rechinger, K.H. (1943). *Flora Aegea. Flora der Inseln und Halbinseln des Ägäischen Meeres.* Akad. Wiss. Wien, Math.-Naturwiss. Kl., Denkschr., 105 (1).

ROTH, C (1978). Off the Marry-Go-Round and on the Escalator. WILLIAM, S., From Ought to Action in Environmental Education,. (Columbus OH: SMEAC Information Reference Center).

Uzell, D., Rutland, . & Whistance, D. (1995). Questioning Values Environmental Education. 1 . Guerrier, . Alexander, J. Chase & . ' (Eds), Va/ues and the Environment: Socia/ Science Perspective. Chichester: John & Sons

Salequzzman, M.D. & Stocker, L. (2001). The context and prospects for environmental education and environmental career in Bangladesh. *International Journal of Sustainability in Higher Education*, 2 (2), 104

Sergiovanni, . (1994). Building community school. San Francscio,CA: Jossey-Bass Publications. Simmons, D. (1986). What students gain from the resident environmental education experience: The teachers' perspective *Environmental Education and Information*, (5), 210-230.

Schneider, I. E., Burnett, G. W. (2000) Protected area management in Jordan. *Environmental Management*, No 25, pp. 241-246.

Simmons, D. (1991). re we meeting the goal of responsible Environmental Behavior n examination of Nature and Environmental Education Centre Goals. *Journal of Environmental Education*, 22(3), 16-21.

Simmons D. (1986), What students gain from the resident Environmental Education experience: The teacherø perspective, *Environmental Education and Information*, 5(4),

Smith, B. (1986)"The role and organization of Nature Centers in the United States". *Environmental Education and Information*».

Stevenson, R.B., (2006) Tensions and transitions in policy discourse: recontextualizing a decontextualized EE/ESD debate. *Environmental Education Research* 12(364), 2776290.

Sterling, S. (1992). *Coming of Age - A Short History of Environmental Education* (to 1989). (Walsall, National Association for Environmental Education),
STERLING, S., & EDET GROUP (1992)

Stojanov, N. & Kitanov, B. (1945). Florata na ostrov Tasos. *God. Sofijsk. Univ.*, 41: 233-320.

Stojanov, N. & Kitanov, B. (1946). Florata na ostrov Tasos. *God. Sofijsk. Univ.*, 42: 89-196.

Stojanov, N. & Kitanov, B. (1950). Rastitelnit. otno-enija na ostrov Tasos. *Izv. Bot. Inst. (Sofia)*, 1: 214-357.

Strid, A. & Kit Tan. [Eds.] (1997). *Flora Hellenica*. Vol. 1. Koeltz Scientific Books.

Strid, A. & Kit Tan. [Eds.] (1998). *Flora and vegetation of North East Greece including Thasos and Samothraki*. Botanical Institute, University of Copenhagen.

Trimis, S. & Savva, S. (2005). Artistic learning in relation to young children's chorotopos: an in depth approach to early childhood visual culture education. *Early Childhood Education Journal*.

Tilbur, D. & Cooke, J. (2005). *National Review of Environmental Education and its Contribution to Sustainability in Australia: Frameworks for Sustainability* Canberra. Australian Government Department of the Environment and Heritage, ARIES

Townsend, C.C. (1977). Bryophytes from some Greek islands. *Revue bryol. lichén*, 43: 389-396.

Trakolis, D. (2001) Perceptions, Preferences and Reactions of Local Inhabitants in Vikos-Aoos National Park, Greece. *Journal of Environmental Management*. Vol. 28, pp. 665-676

Tutin, T.G. et al [Eds.] (1964-1980). *Flora Europaea*. Vols 1-5. Cambridge University Press

Walpole, M.J. and Goodwin, H.J. (2001) "Local attitudes towards conservation and tourism around Komodo National Park, Indonesia". *Environmental Conservation*. Vol. 28, No. 2, pp. 160.

Wheeler, k. (1985). *International Environmental Education: A Historical Perspective*.
Environmental Education and Information,

Venter, A.K., Breen, C.M. (1998) Partnership forum framework: "Participative framework for protected area outreach". *Environmental Management*. No 22, pp. 803-815.

Vladimirov, V., Dane, F., Stevanovi , V. & Tan, K. (2009). New floristic records in the Balkans: 12. *Phytologia Balcanica*, 15: 431-452.

UN (United Nations) (2005) *Unece Strategy for Education for Sustainable*

Development, 17-18 March, Vilnius, Lithuania.

: R(91)8/17 , . . .

European Commission (E.C.) (2005). *Commission Staff Working Paper: Progress towards the Lisbon Objectives in Education and Training*. SEC (2005) 419, Brussels.

European Commission (E.C.) (2005). "Communication from the Commission to the Council and the European Parliament on the Review of the Sustainable Development Strategy: A Platform for Action". COM 685/final, Brussels

Unesco (2003). *United Nations Decade for Education for Sustainable Development: Draft frame for International Application*. from <http://portal.unesco.org/education>

United Nations (1992). *Agenda 21, Chapter 36*. from <http://www.un.org/esa/sust-dev/documents/agenda21/english21chapter36.htm>.

Internet

www.minenv.gr

1. [http://www.minenv.gr/1/12/121/12103/g1210300/00/eniaios katalogos 08%20-](http://www.minenv.gr/1/12/121/12103/g1210300/00/eniaios_katalogos_08%20-)

: Natura 2000

2. www.pamitha-np.gr/index_periballontiki.htm

3. www.ekby.com

4. www.kpe.gr E

6 <http://pyrgos-news.blogspot.com>

7 www.oikipa.gr

8 <http://www.esdtoolkit.org>

. . . & . . . ;

1. . 1650/1986 (. 160/ .). (-)

2. . 2742/1999 (. 207/ . /7-1 -99). &

<http://www.minagric.gr/Greek/2008>

2007.

6 .

, . 86/1969, 7. . 1969,(. 251-288).

. . 1587/ /1975

. . 474/ /1977

. . 1041/ /1977

. . . 88/ /1985

. . . 156/ /1986

. . 527/ /1992

	/	/	/ FAX	
<p>1.</p> <p>2/3219/ -5-95</p>	<p>(, M. d.)</p> <p>(, 70)</p>	<p>kpekast1@otenet.gr</p> <p>http://kpe-kastor.kas.sch.gr/</p> <p>http://www.kpe.gr</p>	<p>. . 521 00</p> <p>.: 24670 23069, 83433 fax: 24670 84750</p>	<p>04.04, M.Sc.</p> <p>70</p> <p>70</p> <p>60</p> <p>14.40</p> <p>70</p> <p>19, M.Sc.</p>
<p>2.</p> <p>134908/ 7/26 -11-2004 (103 . /28/1/200 5)</p>	<p>(, 70)</p>	<p>kpe-ziak@otenet.gr</p> <p>http://kpe-ziaka.gre.sch.gr/</p> <p>http://www.kpe-ziaka.gr</p>	<p>. . 121 . . 51100</p> <p>.: 24620 86055 fax: 24620 86056</p>	<p>16</p> <p>70</p> <p>70</p> <p>09</p>
<p>3.</p> <p>2/72942/11-7-02</p>	<p>(, 70)</p> <p>(, 70)</p>	<p>mail@kpe-melit.flo.sch.gr</p> <p>http://kpe-melit.flo.sch.gr/index.html</p>	<p>. . 530 74</p> <p>.: 23850 81220, 2385081224</p>	<p>16</p> <p>70</p> <p>70</p> <p>09</p>
<p>4.</p>		<p>kpevelvento@yahoo.gr kpevely@free-mail.gr</p> <p>http://www.kpevelventou.gr/</p>	<p>T.K. 50400</p> <p>.: 24640 31913 fax: 24640 31909</p>	

	/	/	./FAX /	
14. [REDACTED]	60, M.Sc. : 11	kpekilkis@sch.gr http://www.kpekilkis.gr	61100 : 2341094303 ./fax: 23410 5218 7 fax: 23410 94351	: • 09 • / 11 • M.Sc., 19
15. [REDACTED] 66659/ 7/31/8/2 006	:	mail@kpe- giann.pel.sch.gr http://kpe- giann.pel.sch.gr/	. . 58 100 : 23820 82051, 82206	: • • •
16. [REDACTED] 2/72942/11-7- 02	: 11 : 11	kpe-paran@sch.gr http://www.kpeparanestio u.gr	. . 66035 : 25240 21005	: • 06 • • 11 • 14 • 11 • 70
17. [REDACTED] 2/3219/11-5-95	:	info@kpesoufliou.gr http://www.kpesoufliou.g r	. 3 : 684 00 : 25540 24383, 24345, 24383	: • • • •
18. [REDACTED] 66659/ 7/3-7- 2006	:	kpefilip@yahoo.gr http://www.kpe-philippi.gr	. . 64003 : 2510 516661 fax: 2510 516661	: • • •

	/	/	/FAX	
19. ██████████ ██████████ 66659/ 7/3- 7-2006 (██████████ 993/ /26-7- 2006)	M.Ed., : : 70	mail@kpe-vistonidas.gr http://www.kpe-vistonidas.gr	. . 67064 .: 25413 52566-67-68 2541096926 fax:2541352569	: • • • 18.10 70 11
20. ██████████ ██████████	70 : 70	mail@kpe-marou.rod.sch.gr info@kpeparonias.gr http://www.kpeparonias.gr	. . 694 00 .: 25330 22596 fax: 25330 22399	: • 11 • 70
21. ██████████ 2/72942/11- 7-02	: : :	kpeart@sch.gr http://kpe-arach.art.sch.gr	. 47 100 .: 26810 69683, 69683	: • • • •
22. ██████████ 2/3219/11- 5-95	: : :	kpekon@otenet.gr Http://users.otenet.gr/~kpekonits	. . 441 00 .: 26550 23903, 23825, 23903, 23825	: • • • • •
23. ██████████ ██████████	: : :	kpepram@otenet.gr http://www.kpe-pramanton.gr	. . 44001 .: 26590 61271 fax: 26590 61220	: • / • •
24. ██████████ ██████████	: 04.04 : 70	kpefilipiadas@gmail.com	. . 48200 .: 64 .: 6972321964	: • • 11 • 70 09

	/	/	/FAX /	
25. [REDACTED]	, 11 : 01	kpefilia@otenet.gr	6 : 41300 : 26640 22000 fax: 26640 22000	• 18.12
26. [REDACTED] 2/4402/15- 7-98	:	mail@kpe-makrin.mag.sch.gr http://users.otenet.gr/~kpe Http://kpe-makrin.mag.sch.gr	. 370 11 : 24280 69040, 90010, 99010	• • • • •
27. [REDACTED] 2/3219/11- 5-95	:	kpemou@otenet.gr http://www.kpem.gr/	. 430 60 : 24450 43242, 42326, 43363, 42882	• • • • • • •
28. [REDACTED]	:	mail@kpe-mavrov.lar.sch.gr kpemavrov@gmail.com http://kpe-mavrov.lar.sch.gr	. 40003 : 2494022835, 22836	• • •
29. [REDACTED]				
30. [REDACTED]	: , M.Sc., 19 : , M.Sc., 06	kpe.elassonas@gmail.com kpe@thess.pde.sch.gr http://thess.pde.sch.gr/kpe	40200 1 : 24930 29570, 29571 fax: 24930 25053	• 70 • 12.02 • , M.Sc., 20

				.FAX
31.	12 70	trikalakpe@gmail.com http://sites.google.com/site/trikalakpe/home http://trikalakpe.blogspot.com/		03 60 19
32.	2/5861/23-10-97	dipezak@sch.gr mail@dipe.zak.sch.gr http://www.kpezakyn.gr	.29092 : 26950 53417 26950 53418	
33.	70 66659/ 7/0 3-07-2006	kpethinal@ionion.pde.sch.gr	. 49081 : 26630 98176 fax: 26630 98176	19
34.	M.Sc.	kpelefka@otenet.gr mail@kpe-sfakiot.lef.sch.gr	. 31080 : 26450 61316 26450 61351 fax: 26450 61638	
35.	70 72942/ 2/1 1-07-2002 19	kpe-ith@otenet.gr http://kpe-ithak.kef.sch.gr	28300 : 26740 33430 fax: 26740 33430	17.01 06
36.	03 70	kpe.lefkimmis@gmail.com	49080 : 26620 25236 fax: 26620 25236	19 02 70

	/	/	/ FAX	
42. 2/72942/11- 7-02	:	kpeamf2@otenet.gr http://www.kpeamfissas.edu.gr	3 33100 22650 79180	:
43. 2/2290/24-3- 98	:	kpestypa@otenet.gr kpestyl@sch.gr http://www.kpestylidas.gr	353 00 22380 23121, fax: 22380 23137	:
44. 2/72942/11- 7-02	03 04.04	kpeypatfth@sch.gr http://www.kpeypatis.gr	35016 22310 98071 fax: 22380 98072	17.06, 11, 18.13, 18.13, 18.13,
45.	60 12	mail@kpe-karpen.evr.sch.gr http://kpe-karpen.evr.sch.gr	4 36100 22370 80843 Fax: 22370 80843	11 18 11
46.				

	/	/	/ FAX	
47. [REDACTED] 2/3219/11-5- 95	:	acee@otenet.gr http://www.kpea.gr/	3 : 164 51 : 210 9959250-251, 9959251	:
48. [REDACTED] 2/5861/23- 10-97	:	mail@kpe-drapets.att.sch.gr http://www.kpedrapetsonas.gr	1 & : 186 48 : 210 4618297 210 4624627, 4612422	:
49. [REDACTED]	: 70 : 04	kpelav@yahoo.gr http://kpelavrio.info/	518 : 19500 : 22920 22693 fax: 22920 25880	:
50. [REDACTED] 7/ 66659/ 3- 7- 2006/	04 : 04	kpe_troizina_methana@yahoo.gr	: : 18020 : 22980 35250 : /fax.: 22980 35150	:

	/	/	/ FAX	
51. 2/5861/23- 10-97	70 60	mail@kpe-kal.mes.sch.gr http://www.kpe-kalamatas.gr/	2 241 00 27210 96062, 86147 fax: 27210 - 86147	• E 18.02 09 02 70 17 02 70
52. 7/134908/26- 11-2004	70 05	mail@kpe-arg.arg.sch.gr kpenkiou@yahoo.gr http://www.kpenkiou.sch.gr/	8, 21053 27510 52303 fax: 2751051177	• 05 60
53. 66659/3/7/2006	70	mail@kpe-iraias.ark.sch.gr	22028 27950 31212 fax: 27950 31212	•
54.	12.05 01	mail@kpe-kastr.ark.sch.gr	22013 27920 22004 fax: 27920 22009	• 60 11 10
55.	70 14.04	mail@kpe-smynous.lak.sch.gr	23200 27330 94100 fax: 27330 94373	• 03 70- , M.Sc. 05

	/	/	/ FAX	
56.	: 18.12 : 05	kpe-molaon@sch.gr http://www.kpemolaon.gr	. . 23052 : 2732 024175 fax: 2732 023158	• • •
57.	: 19, : 70,	mail@kpe-sikyon.kor.sch.gr	123 . . 20100 : 27410 77036	• •
58.	:	mail@kpe-asomatos.les.sch.gr info@kpeevergetoula.gr http://www.kpeevergetoula.gr	. . 811 01 : 22520 29039, 29038	• • •
59.	: 70 : 70	mail@kpe-chiou.chi.sch.gr http://kpe-chiou.chi.sch.gr/	. . 82200 : 2271 094478	• • • • •
60.				
61.	: 13 : 18.31	kpekorthiou@sch.gr mail@kpe-androu.kyk.sch.gr http://kpe-androu.kyk.sch.gr/	. . 84502 : 22820 61424, 61423	•

	/	/	/FAX	
62. 2/72942/11- 7-02		mail@kpe-petal.dod.sch.gr http://www.kpepetaloudon.gr/	. . 85106 .: 22410 41102, 41102	• • • • •
63. 2/72942/11- 7-02	04	mail@kpe-archan.ira.sch.gr http://kpe-archan.ira.sch.gr/	. . 70100 .: 2810 752970, 752971	• • • • 70 1706
64. 2/72942/11- 7-02	05, M.Sc. 04.02, M.Sc.	kpevamou@sch.gr http://kpe-vamou.chan.sch.gr/	. 73008 .: 28250 83230 fax: 28250 83231	• • • • • 70 60 60 02, M.Sc. 19, M.Sc.
65. 7/134908/06- 12-2004	A 60 04, M.Sc.	mail@kpe-neapol.las.sch.gr http://www.kpeneapolis.gr	3 . . 72400 .: 28410 32728	• • 02, M.Sc. 06

	/	/	.FAX /	
66. 7/134908/26-11-2004	, M.Sc. A	mail@kpe-anog.reth.sch.gr mail@kpe-anogion.gr http://www.kpe-anogion.gr	. 74051 : 28340 31662 fax: 28340 20335	• • •
67. 66659/ 7/03-07-2006		mail@kpe-ierap.las.sch.gr http://kpe-ierap.las.sch.gr/	. 72200 : 28420 23103 fax: 28420 23160 : 28423 40300 fax: 28423 40362 : 6932403188	• • •
68.	: 70, M.Ed. : 11	kperouva@gmail.com	() : 70003 : 28940 41045 fax: 28940 41045	• • • 05, M. d.
69.			: 2810 337791	• • •

www.kpe.gr

- .1650/1986, " " .1566/1985,

" " .

- .1892/1990/ 175 . ./19-3-93, " . .".

. C138/17-5-93.

: 24 1988 - 1 1992.

,

. C177/03/6-7-88.

: R(91)8/17 , 1991/ . .

.

1994. UNESCO (1997). *

" . ." (14-

26/10/1977) ó " " 1993,

' " (1975). : . .-

.1. .36 (AGEND 21) - 1992.

2/1242/8-3-93/ .

. . 2/1620/18-3-97 7".

. . 2/2352/28-4-93/ 306 . ./9-4-93

.

. . 2/7337/28-12-93 " 74.000 .

" .

. . 2/3219/11-5-95/ 451 . .23-5-95 "

: - ()- ()- -

- - ()

- . : 2/5861/23-10-97 987 . ./7-11-97 198

. ./4-3-98 ()- -

()- :

: 2/2290/24-3-98. :

- .

- . : 2/4402/15-7-98/ 839 . ./12-8-98. «

».

- . : 2/4401/15-7-98/ 839 . /12-8-98. «

».

- . : 2/6773/8-12-98. «

»

: 2/4259/7-9-99 2/4247/23-9-99 "

".

: 2/57905/4-6-2002 6

: 2/78977/26-7-2002 2/36695/0022/18-7.02/ . .

: " "

: 2/72942/11-7-2002 16 :

,

,

,

,

: 7/41644/24-4-03 6

.

: 7/124301/7-11-03 2/4247/23-9-03 "

".

:599925/ 7/20.6.2003/ /« 25

»

EEFS Environmental and School Initiatives

ENSI Environmental and School Initiatives

CEE Council for Environmental Education

CERI Centre for Educational Research and Innovation

CSD Commission on Sustainable Development
international Environmental Education

UC International Union for Conservation of Nature and natural resources

LEA Local Educational Authorities

NAEE National Association for Environmental Education

CUSC Council for Urban Studies Centers

STES Science, Technology Environment and Society

E

. . .

.

I

.